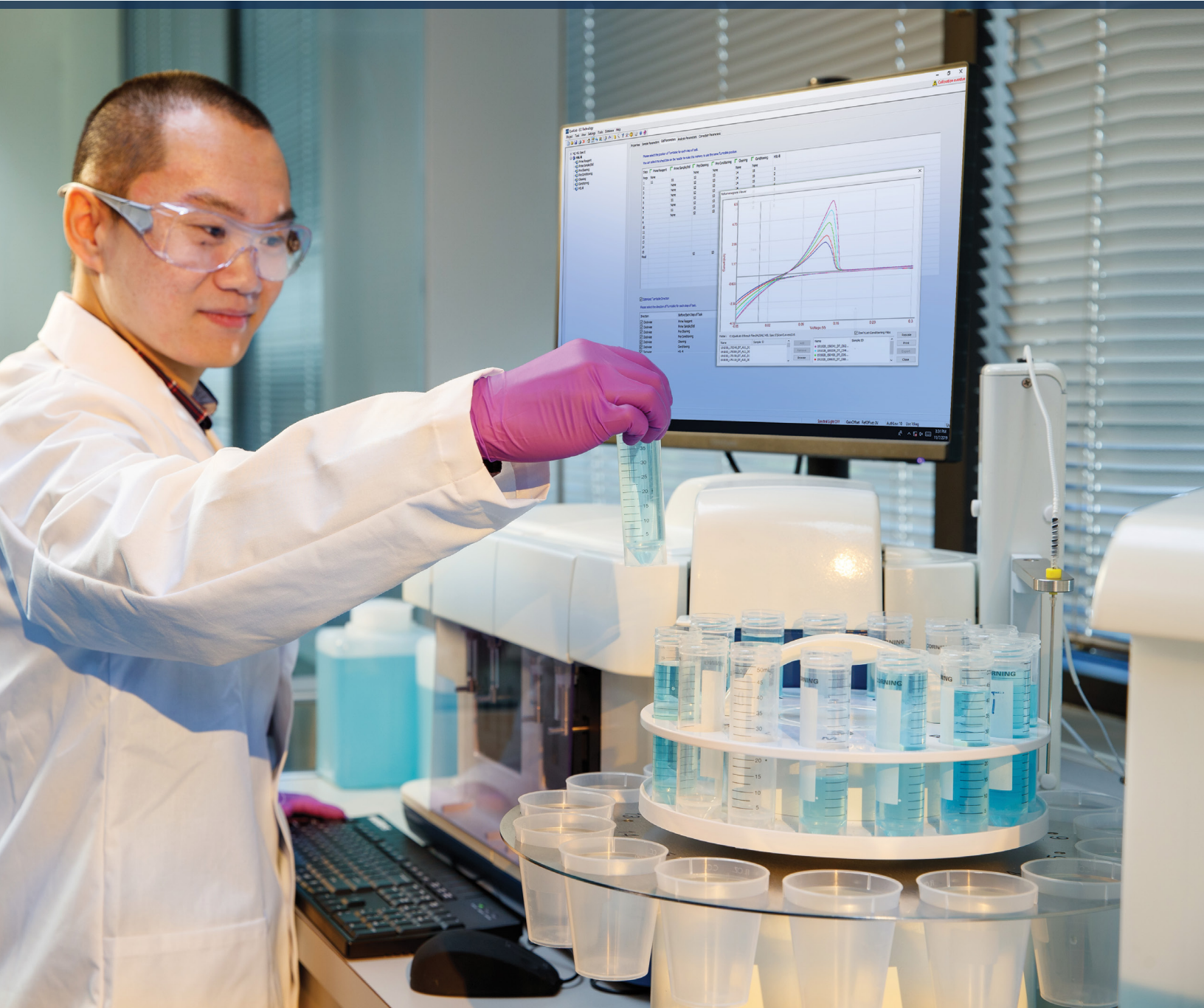


# QUALILAB ELITE®

## Benchtop Plating Bath Analyzers for Reliable and Fast Analyses



***We Keep Your Chemistry Right™***

# QUALILAB ELITE Benchtop Plating Bath Analyzer

**Introducing the all-new QualiLab Elite® Benchtop Plating Bath Analyzer from ECI Technology, the company that pioneered Cyclic Voltammetric Stripping (CVS) analyzers and has fine-tuned analyzer systems for over 30 years.**

This leading analyzer combines CVS and potentiometric titration techniques in a single lab instrument. The analyzer delivers the analytical performance you need to control today's rapidly evolving technologies for printed circuit boards (PCB) and other advanced metal deposition applications. The system, with its combined application-specific analytical methods, provides accurate analysis to establish and maintain correct component concentrations in the processing solutions.

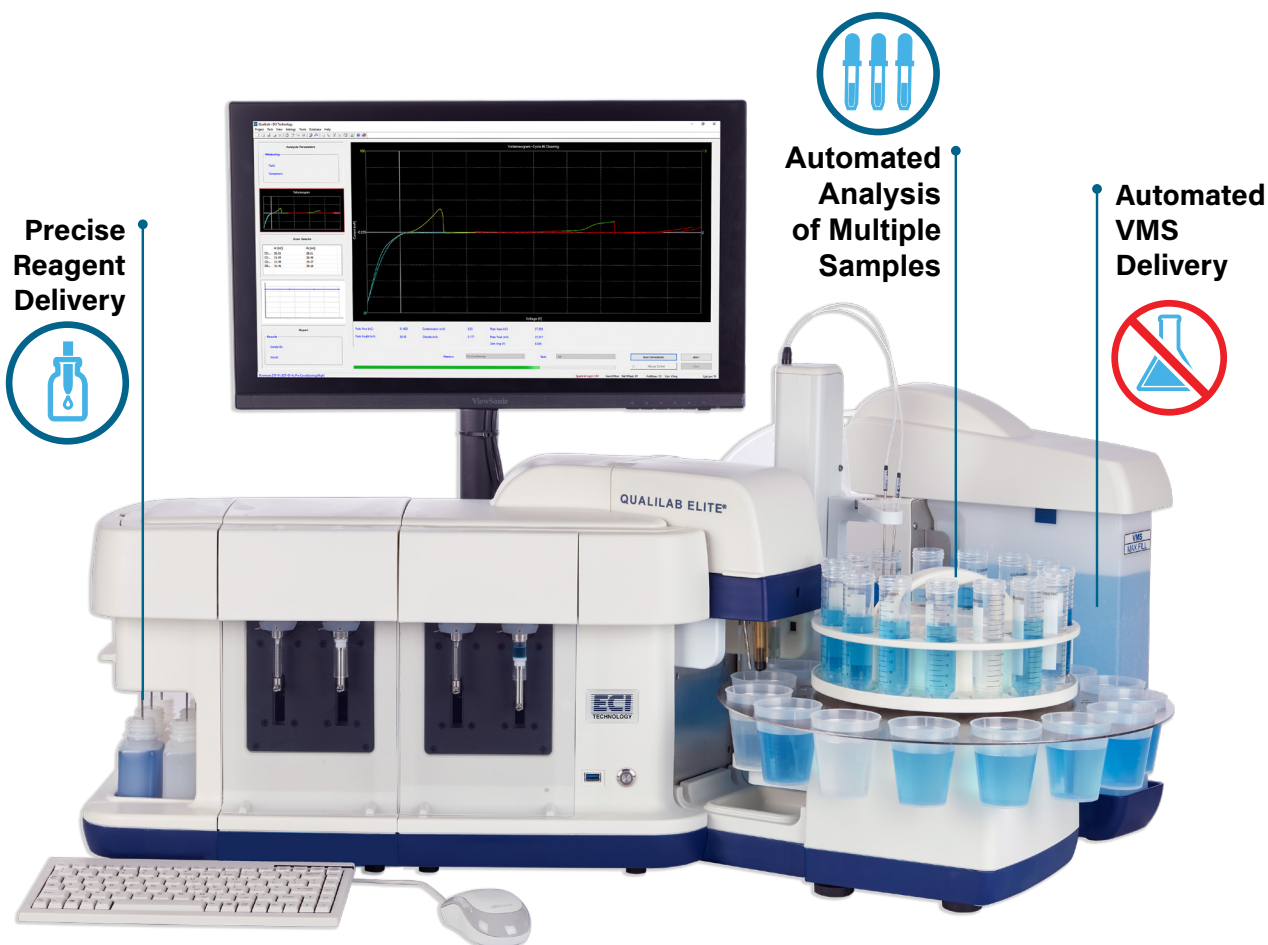
As feature sizes and process windows continue to shrink, the QualiLab Elite analyzer's precise measurement capabilities are essential to providing better controls and efficiency to maximizing the yield, reliability, and profitability of your manufacturing process.

## Optimized, Accurate, and Fast Selectivity

The QualiLab Elite analyzer offers precise analyses in an ergonomic design and supports multi-language operations. The modular configurations range from a compact, streamlined single-sample manual analyzer to a fully automated closed-cell system that can measure up to 42 samples without the intervention of operators. All models are streamlined with a minimum of external components. All analyzer models enable high-precision and highly selective analyses and are integrated with user-friendly software, sophisticated data handling, and reporting.

## Largest Library of Analytical Recipes for Metal Deposition

Through decades of experience, ECI Technology's scientists developed the industry's largest number of chemistry-specific recipes, ChemPacks®. Combined with the QualiLab Elite analyzer, these proprietary certified analytical recipes enable continued metrology support when implementing new and existing plating chemistries to ensure your plating process requirements of today and into the future.



## Applications

- **Electroless Deposition** – buffering agents, complexing agents, reducing agents, and background ions in Cu, Co, Pd, and Ni
- **Electroplating** – organic additives and inorganic bath constituents for Ni, Cu, Sn, SnPb, SnAg, Co, Pd, Zn, and Pd

## Analytical Techniques

- Electrochemical analysis – MLAT, DT, RC, QC, LAT, RDT, SBP, and DPA
  - Electrode potential
  - CVS, CPVS
  - MPVS, Chronoamperometry, and Chronopotentiometry (optional)
- Potentiometric Titration (optional) – direct and back titration

## Features

- Easy-to-use software includes the following:
  - “Get Me Expert” feature provides easily accessible remote and factory-supported troubleshooting
  - Flexibility in programming methods and automation
  - Embedded user help
  - Analysis of all additive components on the same turntable
  - Communications: TCP/IP Networking and LIMS
  - Sophisticated reporting and data handling, such as statistics, history management and trend analysis
- Multi-language operation

## Advantages



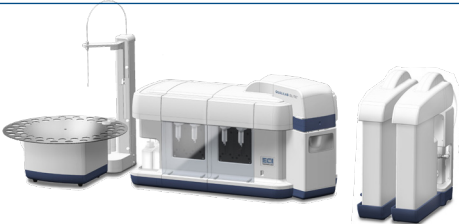
### CVS Analysis

- Largest application library
- Temperature controlled CVS analysis cell
- Excellent selectivity
- User-independent accuracy especially for MLAT analytical techniques
- Low-maintenance reference electrode
- Built-in galvanostat for advanced electrochemistry

### Automation Options

- Automated preparation of support electrolyte and calibration standards
- Waste removal
- DI Water spray cleaning
- Virgin Makeup Solution (VMS) delivery

## Configuration Options

		
<b>QualiLab Elite V10</b> <b>Most Compact</b>	<b>QualiLab Elite V20</b> <b>Fastest</b>	<b>QualiLab Elite V30</b> <b>Most Convenient</b>
Manual analysis	Automated analysis up to 12 samples	Automated analysis up to 42 sample
0-, 2-, 4-syringes	2- or 4-syringes	4-syringes
Auto prep of support electrolyte	Auto prep of support electrolyte and calibration standard	Auto prep of support electrolyte and calibration standard
Automated VMS delivery*	Automated VMS delivery*	Automated VMS delivery
Potentiometric titration*	Potentiometric titration*	
		Automated cell rinsing and draining

\*Optional

# QUALILAB ELITE Benchtop Plating Bath Analyzer



**Combines analytical techniques in a single benchtop lab instrument:**

- **CVS analysis**
- **Potentiometric titration**

Electroplating processes play a critical role in the manufacturing of electronic devices. These processes rely on the use of organic additives – suppressors, accelerators and levelers, and inorganic components – that selectively control deposition, allowing the process to be tuned to a desired deposition profile. Plating bath analysis is required to precisely maintain the balance of multiple components to ensure void-free, bottom-up filling of small, high-aspect-ratio features and other functional properties. The QualiLab Elite system, with its combined application-specific analytical methods, provides accurate analysis for easy replenishment and improved yield from your plating solutions.

**Request a demonstration today.**

## Backed by ECI Technology's Global Support

Contact us for more details. Call or visit us online:

### Headquarters (USA)

**ECI Technology**  
60 Gordon Drive, Totowa  
New Jersey, 07512  
T: +1 (973) 890-1114  
E: [info@ecitechnology.com](mailto:info@ecitechnology.com)  
[www.ecitechnology.com](http://www.ecitechnology.com)

### Global Offices

**Japan**  
T: +81 45 620 4661  
E: [info-japan@ecitechnology.com](mailto:info-japan@ecitechnology.com)

**Korea**  
T: +82 31 262 8503  
E: [info-korea@ecitechnology.com](mailto:info-korea@ecitechnology.com)

**Taiwan**  
T: +886 03 573 5899  
E: [info-taiwan@ecitechnology.com](mailto:info-taiwan@ecitechnology.com)

### Distribution Partners

**Cerma Precision, Inc.** – Japan  
T: +03 3643 2921  
E: [info-@cerma.co.jp](mailto:info-@cerma.co.jp)

**ISI** – Israel  
T: +972 3 9232202  
E: [isi@isil.co.il](mailto:isi@isil.co.il)

**TELTEC North** – Germany  
T: +49 7 903 91 44 0  
E: [info-de@teltec.com](mailto:info-de@teltec.com)

**TELTEC South** – France  
T: +33 467 22 40 00  
E: [info-fr@teltec.com](mailto:info-fr@teltec.com)

### TransTechnology India Pvt. Ltd. – India

T: +91 9810449898  
E: [trans-tec.sg@trans-tec.com](mailto:trans-tec.sg@trans-tec.com)

### WESi Technology – China

T: +86 21 5058 0051  
E: [info@wesitechnology.com](mailto:info@wesitechnology.com)

### WKK DISTRIBUTION LTD.

Hong Kong  
T: +852 2357 8888  
E: [wkk\\_hongkong@wkk.com.hk](mailto:wkk_hongkong@wkk.com.hk)

### WKK SINGAPORE

T: +65 6741 7322  
DDI: +65 6469 6506  
E: [hk\\_yip@wks.com.sg](mailto:hk_yip@wks.com.sg)



***We Keep Your Chemistry Right™***

